



St Barnabas and St Philip's Newsletter

Autumn 1—Week 8 —2024/25



Each week, children who display exemplary learning behaviours are chosen as our **stars of the week**.

This week our stars of the week are:

**Reception stars begin in Autumn 2*

Year 1 - Luise

Year 2 - Javell

Year 3—Max

Year 4 - Ella

Year 5- Luca

Year 6 - Omar



Important Dates

4th November—
Flu Vaccination Programme

4th November—
Year 1 Workshop for Parents and Students

6th November—
Receptions First Visit to Forest School

7th November—
St Barnabas Remembrance Service

7th November—
Year 3 PSHE Sessions with ACE



Our value this term is **'Wisdom'**

This week our value stars are:

Year 1 - Mikhail

Year 2 - Ana

Year 3 - Daphne

Year 4 - Nika

Year 5- Tayibb

Year 6 - Tim



This week our attendance statistics are:

Reception - 94.6%

Year 1- 92.2%

Year 2 - 97.9%

Year 3 - 98.8%

Year 4 - 99.1%

Year 5- 91.1%

Year 6 - 96%

The winning class is:

Year 4





Autumn Term Note From the Headteacher

As we approach the end of our first half term, I find myself reflecting on the incredible journey we've embarked upon together. The autumn leaves are turning, mirroring the transformations we've witnessed within our school community. It's been a term brimming with excitement, growth, and new beginnings.

I'm thrilled to share that this week marked the launch of our new Parent Teacher Association. This initiative promises to strengthen the bonds between home and school, creating a vibrant network of support for our children. Your enthusiasm and willingness to get involved have been truly heartening, and I'm eager to see the positive impact this will have on our school family.

Our students have been busy exploring the world beyond our school gates, embracing hands-on learning experiences that bring their studies to life. Year 1 ventured into the great outdoors with their Forest School trips, fostering a connection with nature and developing crucial life skills. Year 6 took to the water for an exhilarating kayaking adventure, pushing boundaries and building confidence.

The cultural richness of London has been our classroom this term. Year 5 delved into the world of art and design at the Young V&A, while Year 3 travelled back in time at Gunnersbury Park. Our Year 2 students marvelled at the engineering feat that is Tower Bridge, and our youngest learners in Reception embarked on a prehistoric journey at the

Natural History Museum.

These experiences are more than just days out; they're the building blocks of a well-rounded education. They spark curiosity, encourage questions, and create memories that will last a lifetime. It's been a joy to see our students return to school bursting with enthusiasm, eager to share their newfound knowledge.

As we look forward to the term ahead, I'm filled with anticipation for the learning and growth that awaits us. The foundations we've laid this half term will serve as a springboard for even greater achievements.

Before we part for the half-term break, I want to express my gratitude to our dedicated staff, our supportive parents, and most importantly, our wonderful students. Your collective efforts have made this a truly remarkable start to the academic year.

I wish you all a restful and enjoyable half term. Take this time to recharge, spend quality moments with loved ones, and perhaps reflect on the exciting experiences of the past weeks. When we return, we'll be ready to embrace new challenges and opportunities with renewed energy and enthusiasm.

Happy half term to you all. I look forward to welcoming everyone back for another chapter of learning and discovery.

Miss Timms
Headteacher





Our Value for This Term Is:

WISDOM

HOME SCHOOL VALUES

This term we will be focussing in school on the value WISDOM.

We hope your family will find these ideas helpful as you explore the value and have fun together.

TALK TOGETHER about Wisdom

Wisdom is different from just being clever. Often wise people have lots of experience and can give good advice to help us make difficult decisions. Some people pray because they believe that God can help them to live their lives **wisely**.

Talk together about:

- Making **wise** choices
- The consequences of our words and actions
- Learning **wisdom** from others – including children from parents and parents from children
- Learning from our mistakes and becoming **wiser** through them



READ TOGETHER...

The wise and foolish builders

Jesus told a story about two men. The first man was **wise** and decided to build his house on a rock. This house was hard to build. He had to stand on the rock and dig foundations deep down into that hard rock to make his house strong. He worked for many, many days before his new house was finished. It was a long time before he and his family could move in.

The other man built his house on the sand. This house was easy to build. The sand was soft, easy to stand on, and easy to dig into. He built his house very quickly and soon his family was living happily in their new house.

But then, one day it started to rain. It didn't rain gently. It didn't rain for just a few minutes. It poured. The wind blew and blew. All round new streams began to flow, making their own tracks across the rock and sands. The rainwater washed around the house on the rock and ran down the roads. But the house stood firm, it didn't move, and everyone inside was safe.

The family in the house on the sand looked out at the raging storm. Their house was creaking, it was moving. The water gushed all around. And then crash! As the sands shifted the house tumbled to the ground.

Jesus said, "The man who built his house on rock is like someone who listens to my **wise** teaching and builds their life upon it. When storms and troubles come, they will stand firm."

Bible story based on Matthew 7:24-27

THINK TOGETHER Words of Wisdom

"It's no good shutting the stable door after the horse has bolted."

Anon

This is a well-known proverb. Can you think of a time when you did the right thing but too late?



QUIZ Wordsearch

Can you find the words from the story?

- | | | |
|--------|-------------|----------|
| WISE | HOUSE | FOOLISH |
| STORM | RAIN | BUILD |
| STRONG | FIRM | CRASH |
| ROCK | SOFT | CREAKING |
| SAND | FOUNDATIONS | |

F	U	E	T	W	K	T	F	W	M	L	S
S	O	S	D	W	I	O	W	R	V	A	V
F	B	U	W	L	O	S	O	G	N	P	E
C	X	O	N	L	I	T	E	D	C	T	Q
H	F	H	I	D	S	U	L	O	R	F	W
R	P	S	E	A	A	B	B	P	E	O	S
O	H	E	J	N	N	T	F	K	A	S	L
C	R	A	S	H	M	B	I	V	K	X	T
K	N	I	A	R	S	R	J	O	I	H	H
P	G	N	O	R	T	S	I	P	N	Y	L
X	L	G	Y	F	M	T	J	F	G	S	F
V	X	I	T	F	P	O	A	P	G	S	X





Our Value for This Term Is:



FAMILY FOCUS

Building a Wall of Wisdom

Everyone has a favourite proverb or wise saying. Talk to family members about proverbs that they think give **wise** advice. Ask them to explain the meaning of the proverb and add it to a 'wall of **wisdom**'.

Build your wall by writing each proverb on a 'brick' cut out of paper. Blu-tack the bricks on to a wall.

You can find lots of proverbs on www.phrases.org.uk



To start you off here three well-known proverbs:

"A chain is only as strong as the weakest link"

"Many hands make light work"

"Don't count your chickens before they hatch"



HOME-SCHOOL CHALLENGE

A Brick for the Wall

Make a shoe box 'brick'. Cover the box with paper and write your favourite proverb on the brick.

Then, either in a cartoon drawing or in words (hand written or typed on the computer and printed), tell a story using your proverb as the moral. Finish with the words:

So this proves the proverb, ".....".

(For example, So this proves the proverb "Don't count your chickens before they hatch".)

Decorate the brick so it looks fantastic and take it to school to help build a Wall of **Wisdom**.



FASCINATING FACTS

Why are some teeth called wisdom teeth?

- Your first teeth are called milk teeth. Can your Mum tell you when you cut your first milk tooth?
- Milk teeth normally fall out while you are in primary school and are replaced by adult teeth, which have to last for the rest of your life! Can you remember when your first milk tooth came out?
- **Wisdom** teeth grow much later than adult teeth in most people and are bigger, flatter teeth. Can one of the adults in the family remember when they grew their first **wisdom** tooth?

Over the centuries and in different parts of the world '**wisdom** teeth' have been known by many names:

- In Ancient Greece they were *sophronisteres*, thoughtful teeth.
- Later in Roman times they were given the name *dentes sapientiae*, teeth of wisdom.
- The name **wisdom** teeth was adopted in Britain in Victorian times.
- In Arabic speaking countries, the teeth are called *Ders-al-a'qel*, or teeth of the mind.
- In Spain they are referred to as *muela de juicio*, or teeth of judgment, because they grow as young people leave school and become **wiser** and have more responsibility.



HALL OF FAME

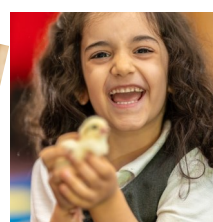
Confucius

Confucius was an ancient Chinese teacher. He lived more than 2500 years ago but such was his **wisdom** and understanding that his teaching is still remembered today.

Confucius wanted everyone to see the importance of making **wise** and thoughtful choices.

One of his sayings is...

"Everything in creation has a beauty of its own but not everyone is able to see it."





Subject Stars

Each half term we give children a Subject Star award for displaying excellent learning attitudes in foundation subjects.

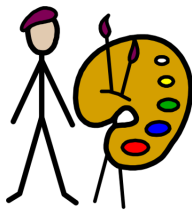
We have subject stars in the following subjects:

Art, Sports, Music, French, Computing and DT

I am an
Artist



Analysing



Creating



Evaluating



I am a
Designer

Explore



Design



Make



Evaluate



I am a
Sports Star



Physical

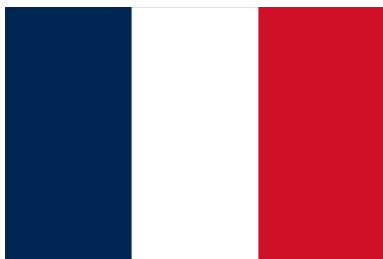


Emotional



Social

Thinking



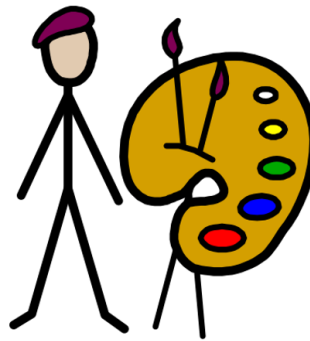


Subject Stars

I am an
Artist



Analysing



Creating



Comparing

Evaluating



Autumn 1

Artists of the Term

Year 1—Lou Lou

Year 2—Maisie

Year 3—Fox

Year 4 -Christianna

Year 5—Kyan

Year 6 - Yaraslava



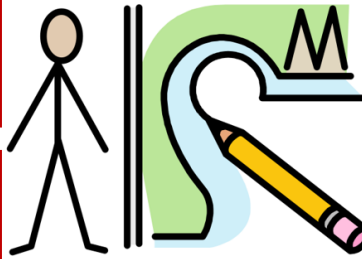


Subject Stars

I am a
Designer



Explore



Make



Design

Evaluate



Autumn 1

Designers of the Term

Year 1—Laura

Year 2—Emilia

Year 3—Nai

Year 4—Hannah

Year 5—Emmy

Year 6 - Aaron





Subject Stars

I am a
Sports Star



Autumn 1

Sports Stars of the Term

Year 1—Musa

Year 2—Gaspard

Year 3—Zendaya

Year 4 -Gabriel

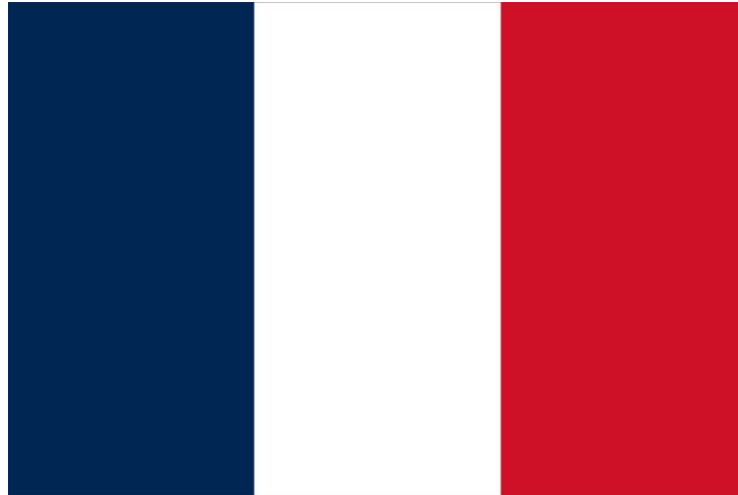
Year 5—Luca

Year 6 - Valentin





Subject Stars



Autumn 1

Linguists of the Term

Year 3—Ana Luiza

Year 4—Christianna

Year 5—Luca

Year 6 - Helena





Subject Stars



Autumn 1

Musicians of the Term

Year 1—Harvey

Year 2—Emma C

Year 3—Aseel

Year 4—Luke

Year 5—Luca

Year 6 - Olivia





Subject Stars



Autumn 1

Computing Stars of the Term

Year 1—Mateo

Year 2—Zayne

Year 3—Kidus

Year 4—Mayson

Year 5—Nathaniel

Year 6 - Ihor





Amazon Wish List

It's been a joy to welcome so many new families to our school this term. Your presence has enriched our community, bringing fresh perspectives and energy to our corridors and classrooms. To our new families: we hope you're settling in well and already feeling at home in our school family.

As we continue to grow and learn together, I wanted to share an exciting opportunity for our entire school community to contribute directly to our students' educational journey. We've created two Amazon wish lists - one for reading and another for maths resources. These lists represent carefully selected items that will enhance our teaching and learning experiences, providing our students with additional tools to support their academic growth.

Our reading wish list includes a variety of books to cater to different reading levels and interests, ensuring that every child can find joy in reading. The maths list comprises manipulatives and resources that make abstract concepts tangible, helping our students

grasp mathematical principles in hands-on, engaging ways.

We understand that times are challenging for many, and please know that there is absolutely no obligation to contribute. However, if you find yourself in a position to help, know that any contribution, no matter how small, will make a significant difference to our students' learning experiences.

For those interested in supporting our initiative, you can find our wish lists at the following links:

Reading Wish List: <https://amzn.eu/70gz5eg>

Maths Wish List: <https://amzn.eu/cw44tXq>

Your support, whether through these wish lists or through the myriad other ways you contribute to our school community, is deeply appreciated. It's this spirit of collaboration and shared commitment to education that makes St Barnabas and St Philip's such a special place.





School Church Services

We appreciate that we are able to visit both St Barnabas and St Philip's each term.

Our service dates for Autumn Term are:

Thursday 7th November —St Barnabas—Remembrance Service

Thursday 28th November —St Philip's Advent Service

Thursday 19th December —St Barnabas—Christmas Service

We invite all parents/carers to join us for these services, but ask that you join us at the church.

Staff are accompanying the children on the walk and having parent's there can sometimes be a little distracting.





Light Service—St Philip's

St Philips

'Come and see'

Thursday 31 October, 4.30pm

**Join us
for our special
All Hallows' Eve
Service of Light**

**Come dressed as your favourite saint or
in your special Halloween costume.
Goodie bags of sweets to take away
after the service**

St Philip's Church, Earls Court Road, London, W8 6QH

The Parish of: St Philip, Earl's Court Road. Vicar: The Reverend Philippa Turner.

Assistant Priest: The Reverend Margaret Ayo. Curate: The Reverend Helen Calner

www.specr.org twitter.com/stphillipsw8 020 7938 1367 parishoffice@specr.org





Light Party—St Barnabas





St Barnabas and St Philip's School Nursery 24-25

Opening January 2025

New Nursery

**Full time places remaining
Extended day available 7:30 – 6:30**

 **Enroll Now**



Contact Us
0207 937 9599
admin@sbsp.rbkc.sch.uk



Visit our website
www.sbsp.rbkc.sch.uk



**St Barnabas & St Philip's
Church of England School**





Donations and School Support

We are incredibly thankful to all the parents/carers who regularly donate to our school community - whether it be through time, bringing in used uniform or books, or through monetary donations.

We would like to bring to your attention several other ways in which you can donate to the school if you are able to:

Amazon Wish Lists : <https://amzn.eu/cw44tXq> or <https://amzn.eu/7ogz5eg>

Easy Fundraising: <https://www.easyfundraising.org.uk/causes/sbsp/?searchSessionId=fbb5681c-3de9-4b02-813e-cd0fc9f3548b>





Governors Fund 24-25

As you may be aware, we are a voluntary aided Church of England Primary School with approximately 210 pupils. We are devoted to providing our pupils with the best possible learning environment based on decent morals and values, and we are proud to have served our community for over a century.

As a Church of England School, we are required to contribute an annual maintenance fee to the London Diocese Board for School. This fee allows the school to effectively benefit from the LDBS maintenance scheme that provides 90% of the overall cost for approved capital projects including redevelopment of the existing facilities and major refurbishments.

Over the years, our pupils have benefitted from a range of capital projects, including, a new bridge linking two blocks, a fully equipped school kitchen, music room, Computing suite, library, refurbished classrooms, new toilets, a new roof and skylights.

I am sure you will appreciate, it is vital for our pupil's education, that we provide them with the best facilities possible. This can only be achieved through the kind generosity of parents, and though the fee per pupil is voluntary, we ask all parents to contribute £45 per pupil per academic year or such amount, as they are able, in order that our pupils continue to benefit from the LDBS maintenance scheme.

Unfortunately, any shortfall in the overall Governors maintenance fund will have to be taken from the school delegated budget that in turn will mean funds being diverted from other areas of the curriculum.

Contributions can be made via the School Gateway : <https://login.schoolgateway.com/0/auth/login>.

or directly to the Governors fund account:
METRO BANK. Sort code: 23-05-80
Account number: 18996065

We appreciate any contributions to this fund.

Address:

St Barnabas and St Philip's
Church of England Primary
School
Pembroke Mews
58 Earls Court Road
Kensington
London
W8 6EJ

Tel: [0207 937 9599](tel:02079379599)

Email: admin@sbsp.rbkc.sch.uk

Term Dates

Please see the [Term Date Section](#) on our School Website for the full details of term dates.

Please note that any holidays in term time cannot be authorised.

